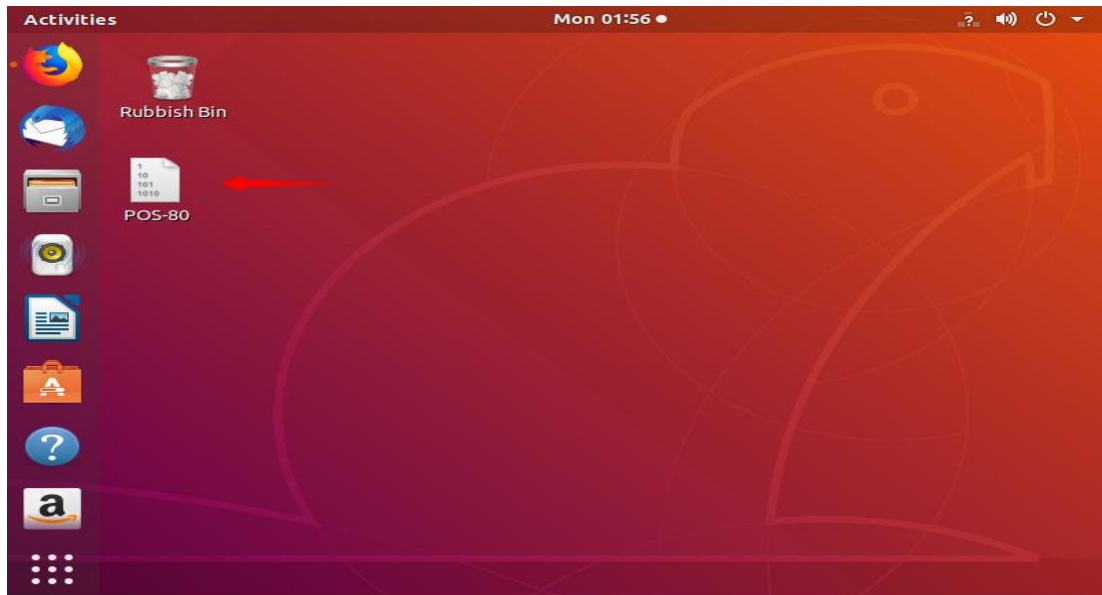
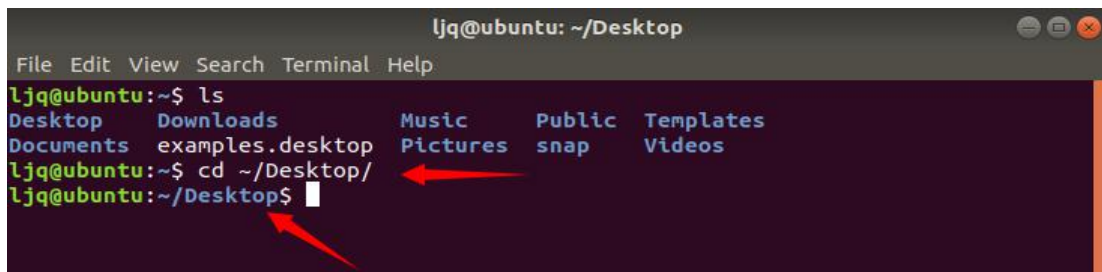


Linux driver installation instructions

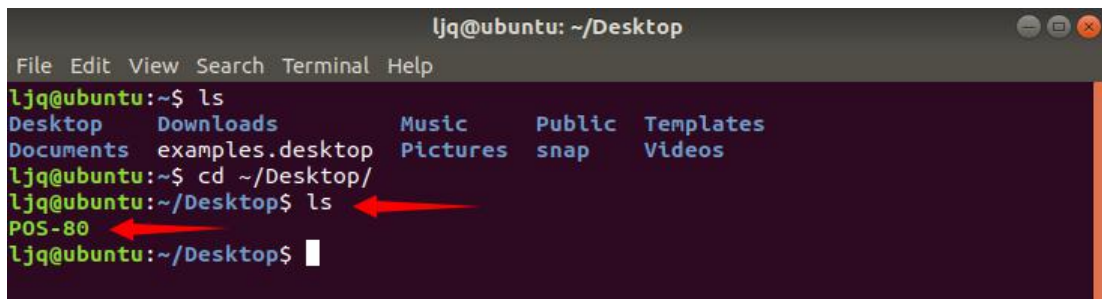
1. Copy the POS-80 driver file to the desktop, as shown below.



2. Right-click the Desktop, select OPEN Terminal, and switch to the Desktop directory with the `cd` command, as shown below. The US dollar symbol will show Desktop. If the system is in Chinese, it may show Desktop.



3. With the `ls` command, check to see if the driver file is in the current directory, and if there are no surprises, you will see POS-80 appear in the list.



4.To install the driver, use root and sudo su command to switch to root. Enter sudo su command and press enter. The password is not visible.

```
root@ubuntu: /home/ljq/Desktop
File Edit View Search Terminal Help
ljq@ubuntu:~$ ls
Desktop      Downloads      Music      Public      Templates
Documents    examples.desktop Pictures    snap        Videos
ljq@ubuntu:~$ cd ~/Desktop/
ljq@ubuntu:~/Desktop$ ls
POS-80
ljq@ubuntu:~/Desktop$ sudo su
[sudo] password for ljq:
root@ubuntu:~/Desktop#
```

5.To change the 777 permissions of the driver, the command is as follows.

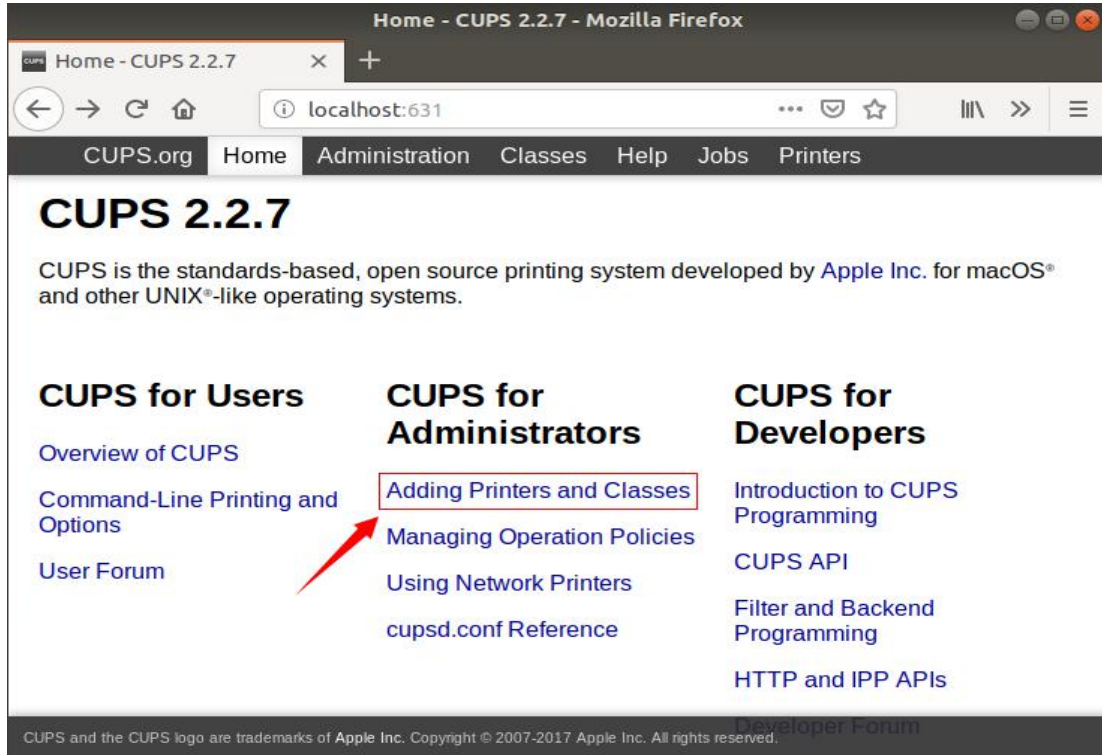
```
root@ubuntu: /home/ljq/Desktop
File Edit View Search Terminal Help
ljq@ubuntu:~$ ls
Desktop      Downloads      Music      Public      Templates
Documents    examples.desktop Pictures    snap        Videos
ljq@ubuntu:~$ cd Desktop
ljq@ubuntu:~/Desktop$ ls
POS-80
ljq@ubuntu:~/Desktop$ sudo su
[sudo] password for ljq:
root@ubuntu:~/Desktop# chmod 777 POS-80
root@ubuntu:~/Desktop#
```

6.Enter./POS-80, then press Enter, note that the previous point is also entered.

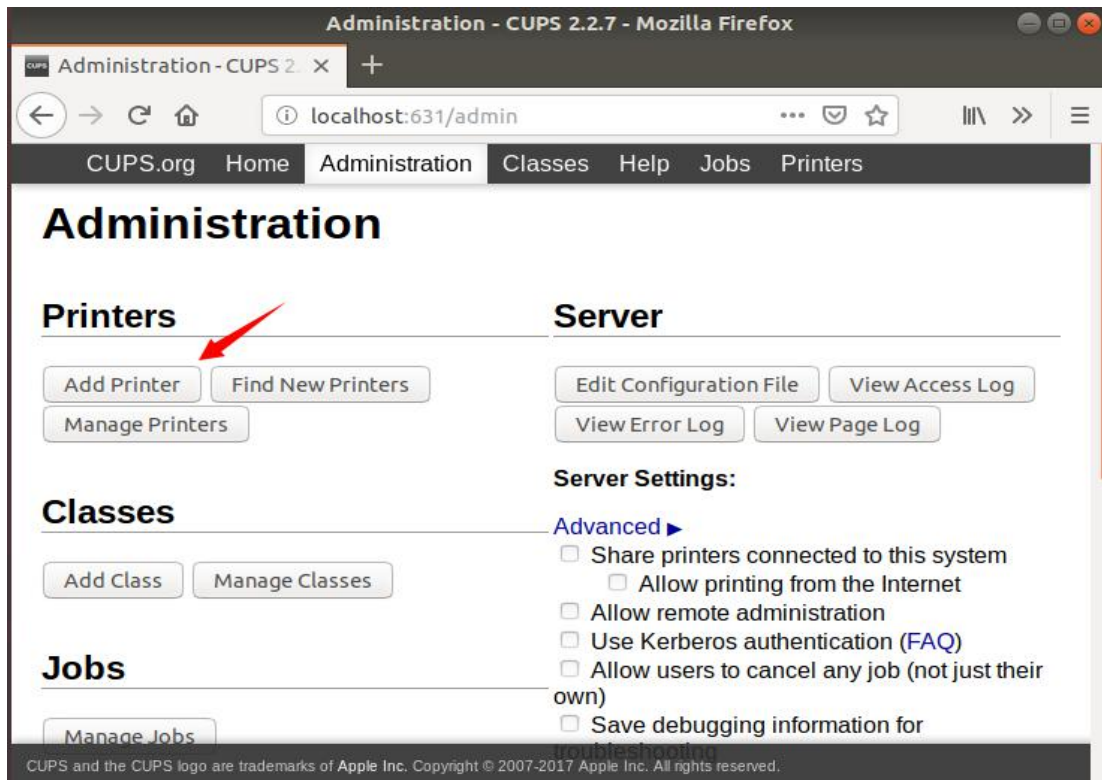
```
root@ubuntu: /home/ljq/Desktop
File Edit View Search Terminal Help
root@ubuntu:~/Desktop# ./POS-80
POS
cupsdrv-2.4.0 installer
-----
Models included:
    POS-80
64
64
Searching for ServerRoot, ServerBin, and DataDir tags in /etc/cups/cupsd.conf
ServerBin tag not present in cupsd.conf - using default
DataDir tag not present in cupsd.conf - using default
ServerRoot =
ServerBin =
DataDir =
11
44
Restarting CUPS
[ ok ] Stopping cups (via systemctl): cups.service.
[ ok ] Starting cups (via systemctl): cups.service.
Go to http://localhost:631, or http://127.0.0.1:631 to manage your printer plea
```

To this display driver has been installed successfully, prompt the driver to open the url, the next is to add a printer.

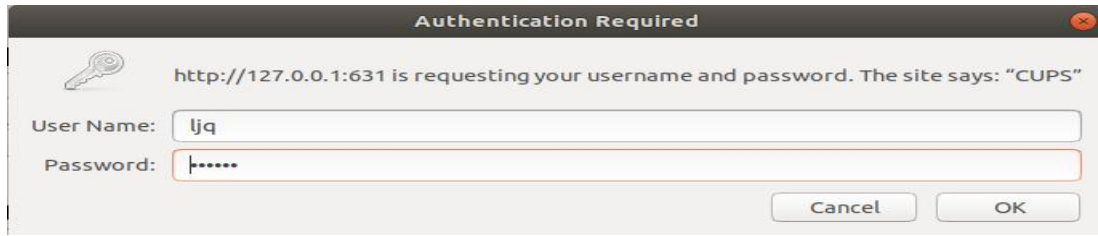
7. Open your browser, input `http://127.0.0.1:631` in the address bar, and press enter. Adding Printers and Classes as shown in the figure below.



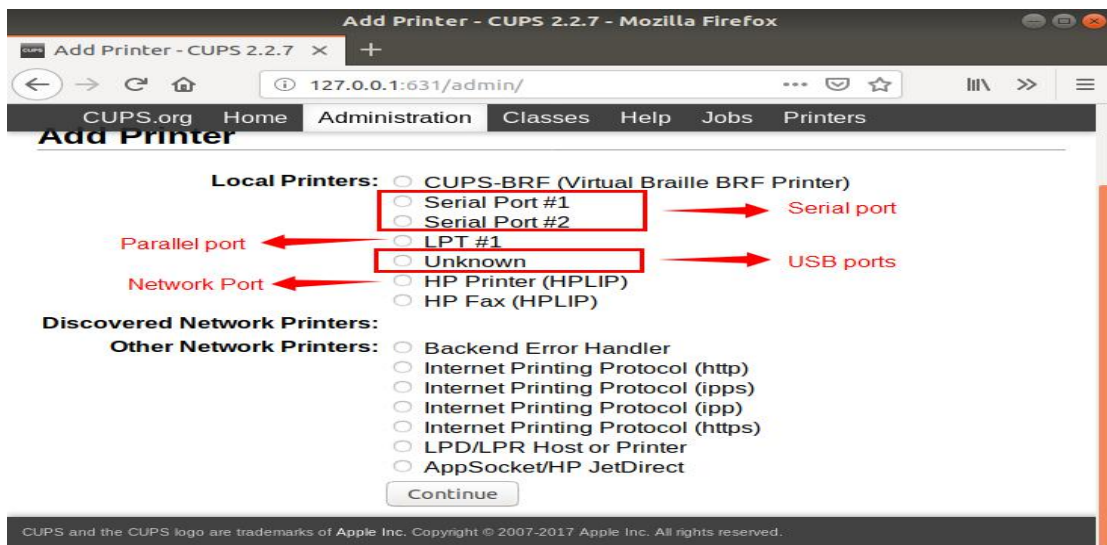
8. Enter Administration, click Add Printer, as shown below.



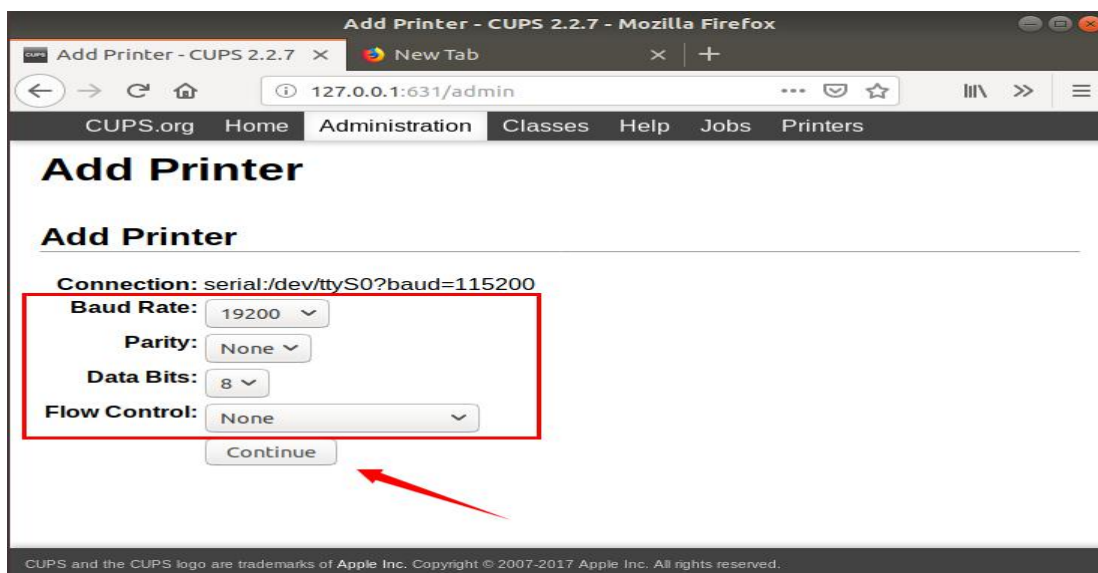
9.A login box may pop up. Please enter the login user and password.



10.After entering the login user and password, click OK, jump to the following screen, select the Local Printers that you want, and click Continue.

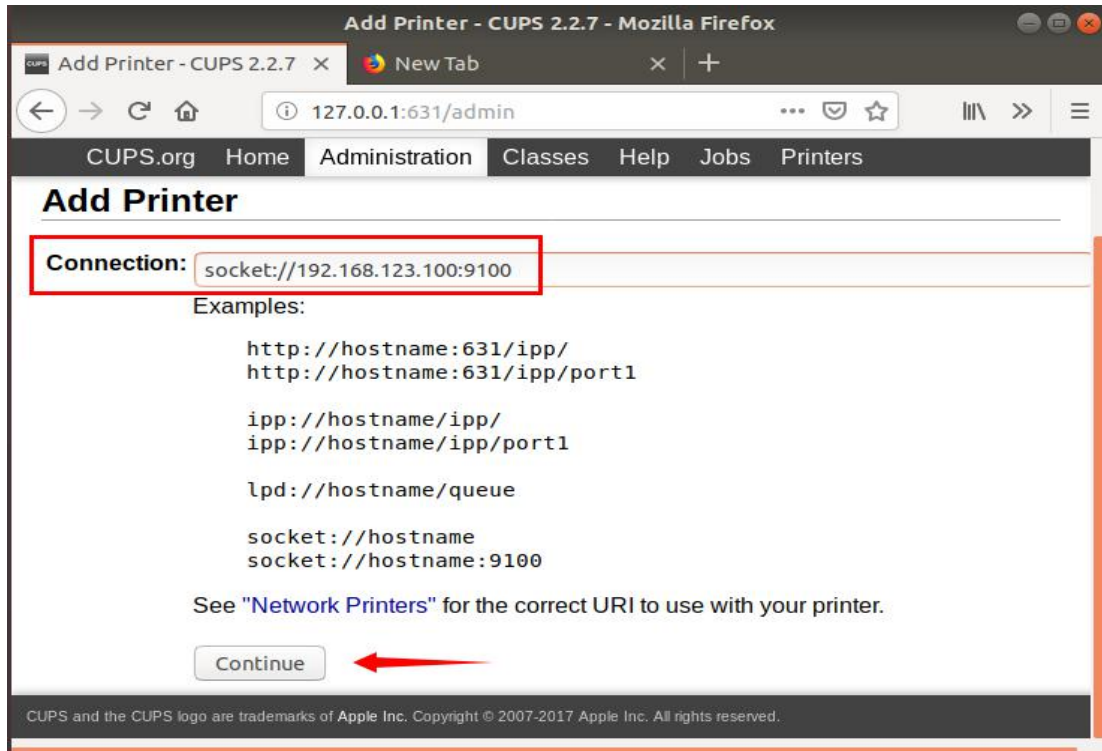


Suppose Local Printers select Serial Port #1, set the same value to the Serial Port configuration of the printer, and then click Continue, as shown below:

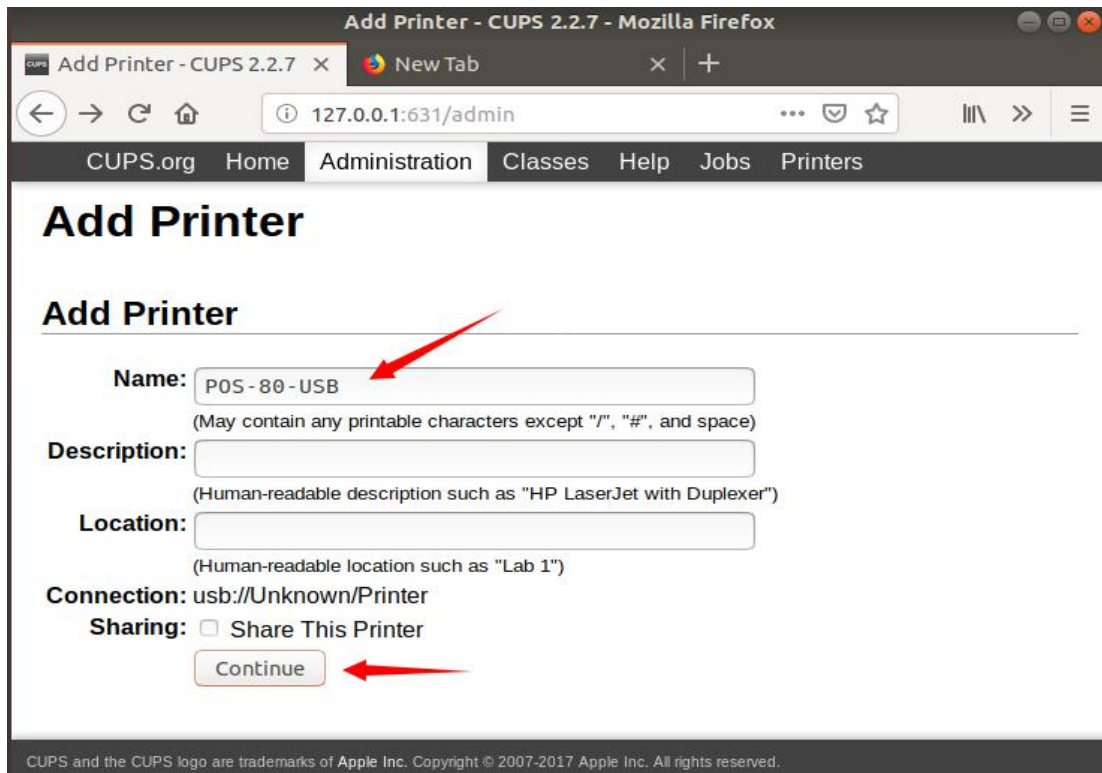


If Local Printers select HP Printer (HPLIP), set it according to the Printer's IP configuration.

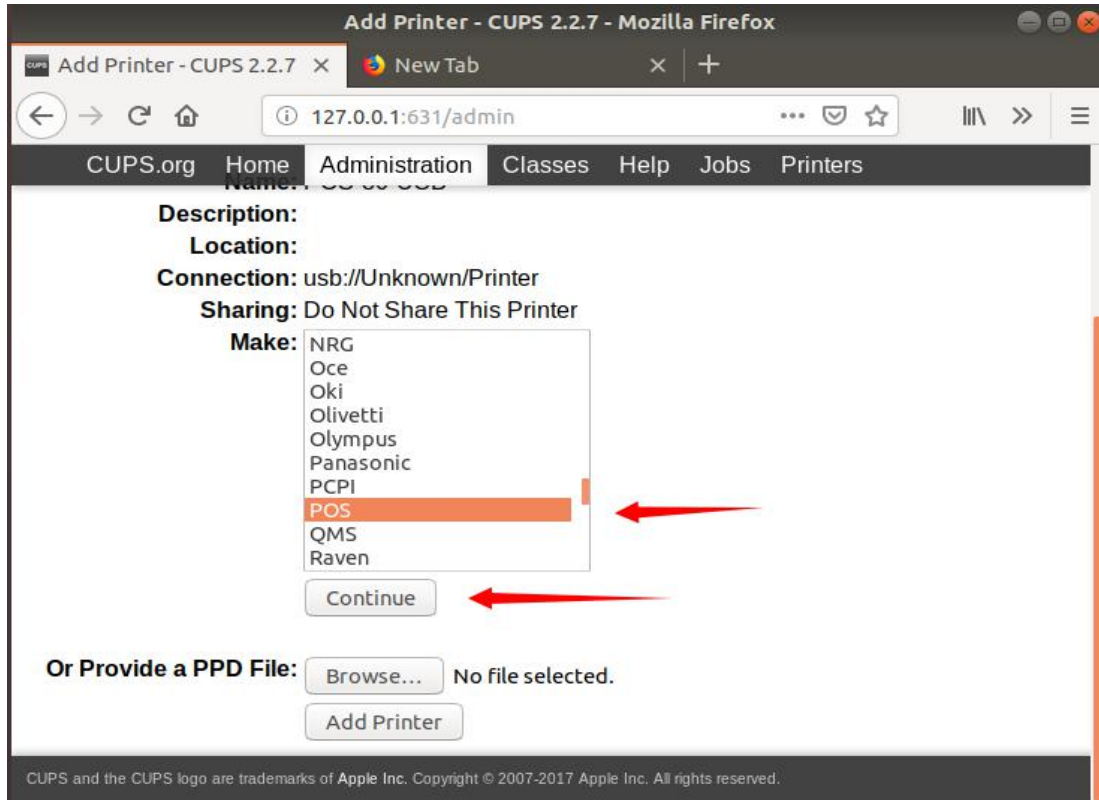
Socket://IP address: IP port, then click Continue, as shown below.



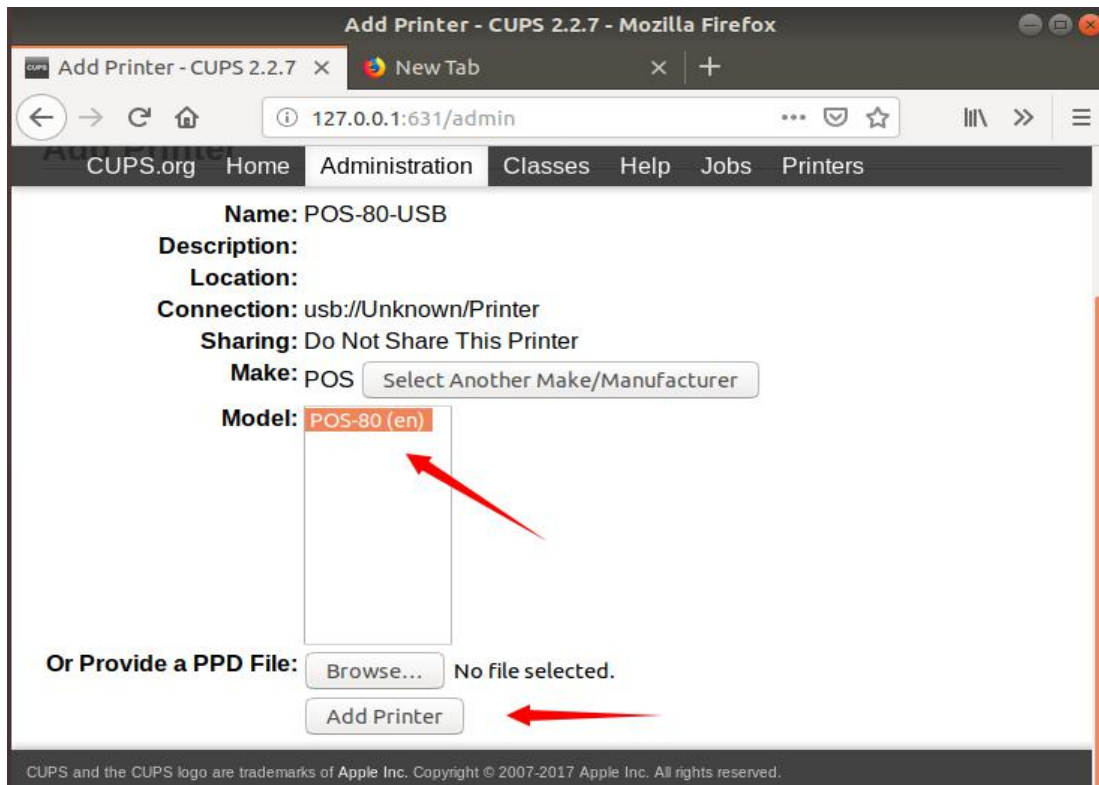
11. Below you can fill in the driver name you want, otherwise you can leave blank, then click Continue.



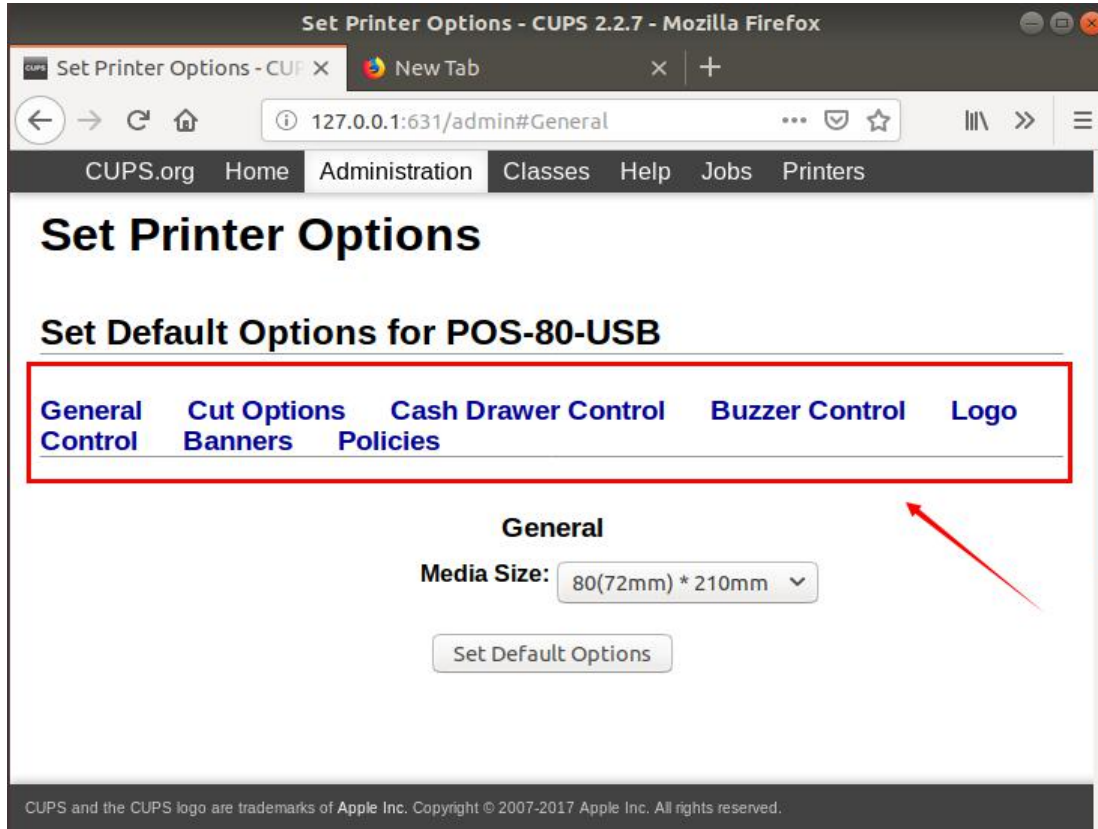
12. Make select POS, and then click Continue.



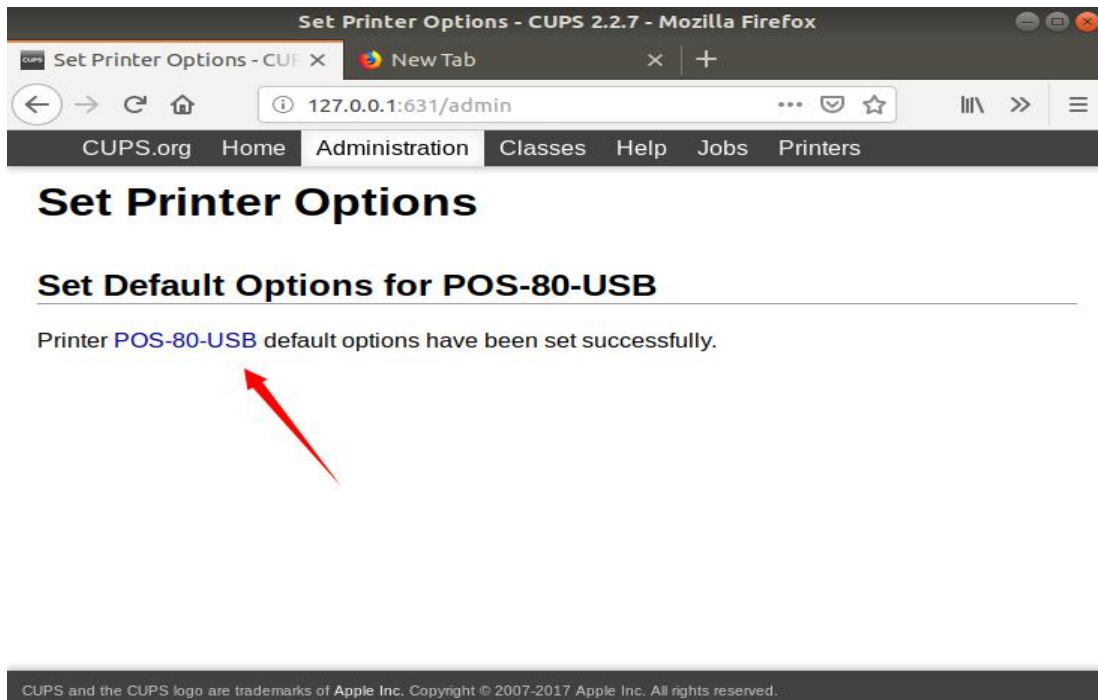
Then enter the following interface, Model select POS-80 (EN), and click Add Printer.



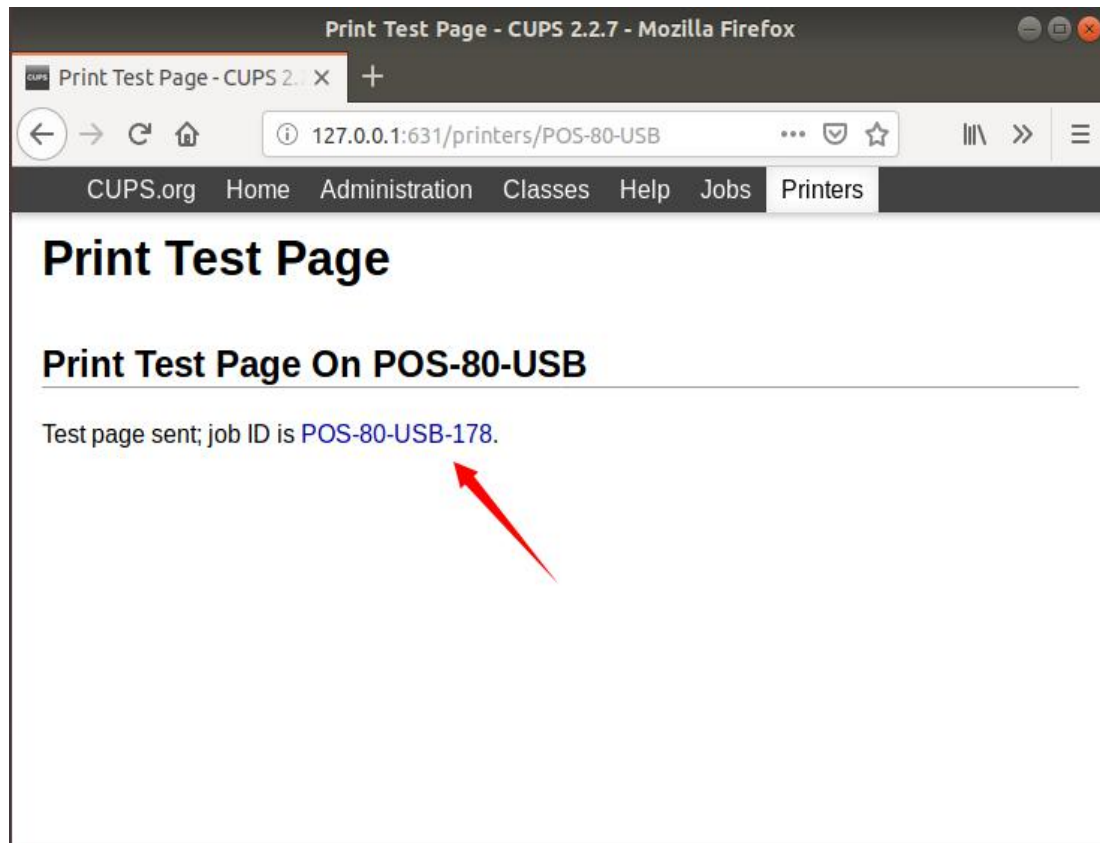
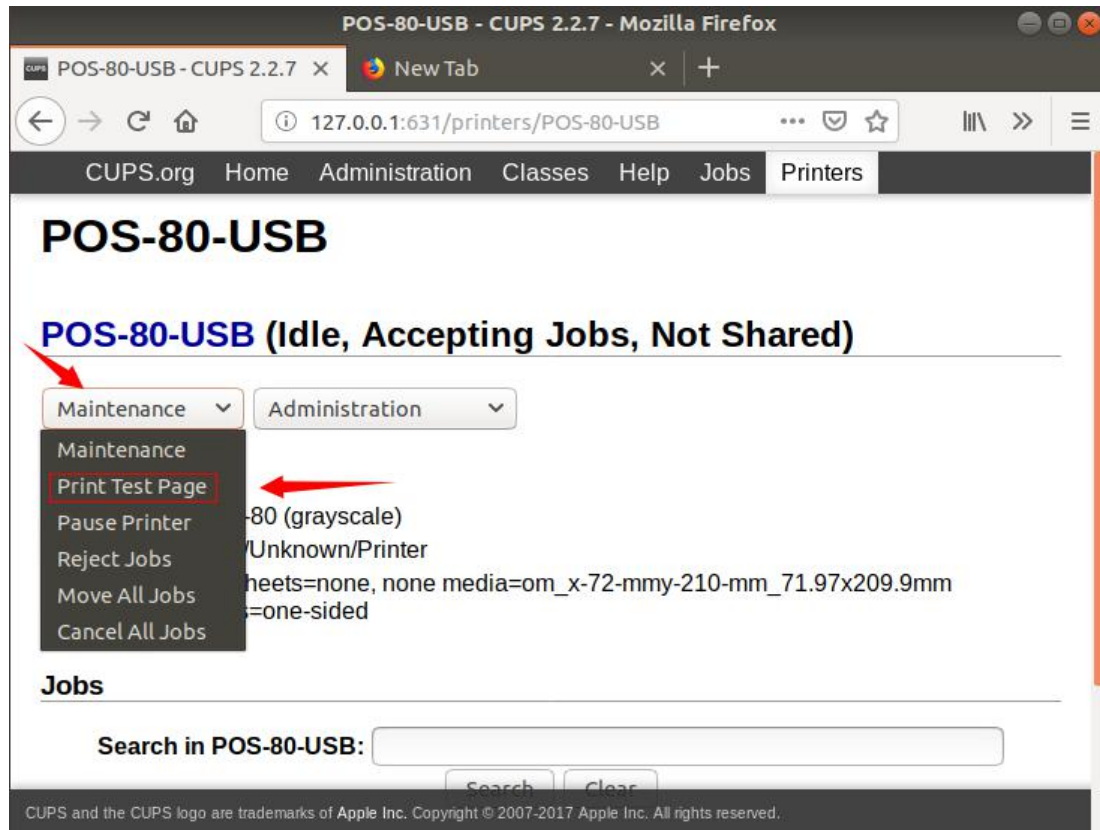
13. Enter the following interface, select the driver setting function you want, and click Set Default Options.



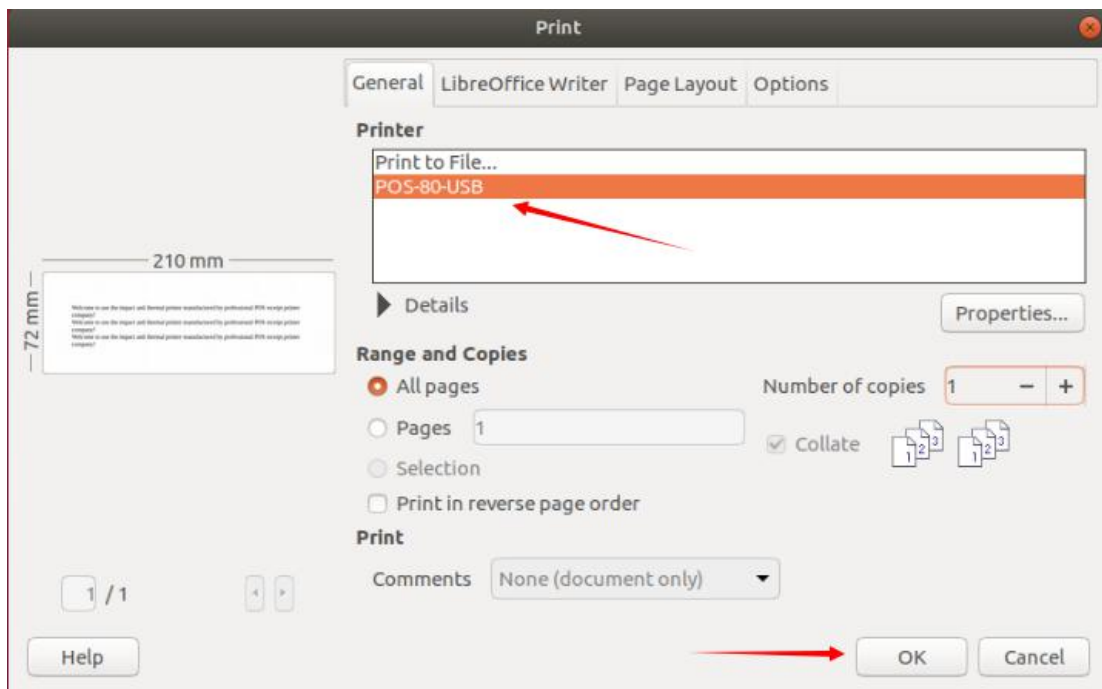
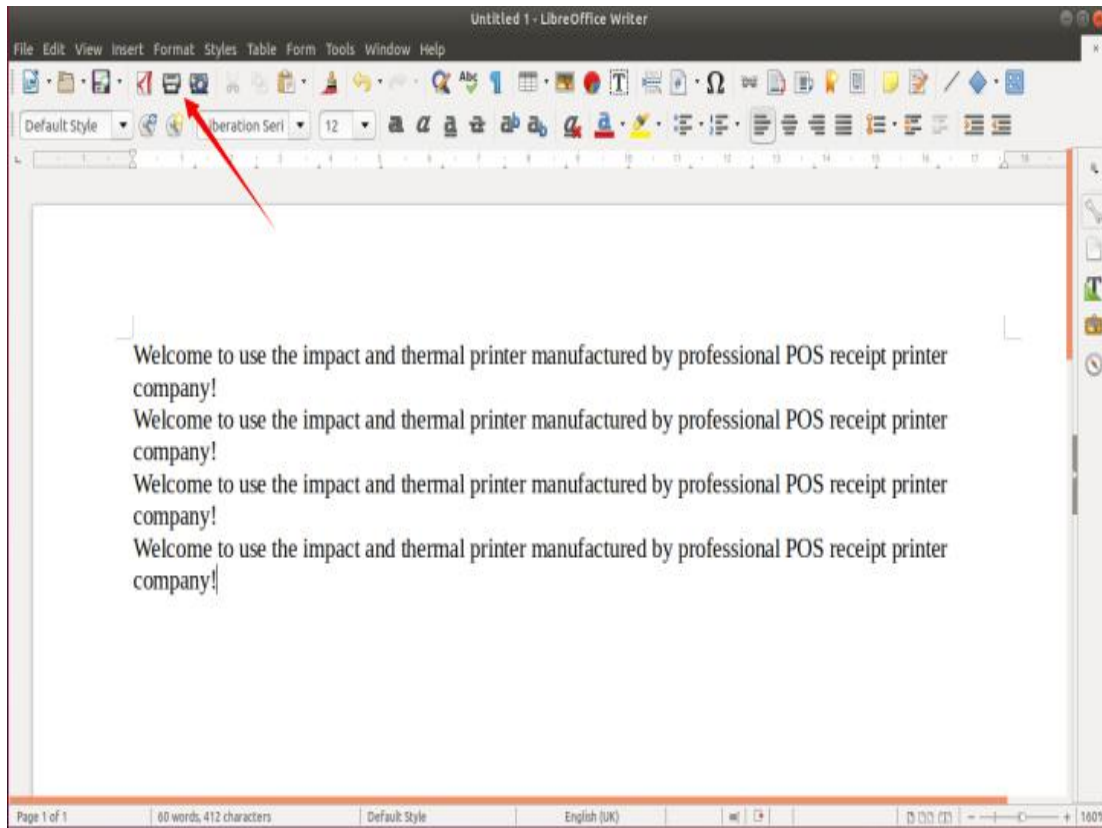
Next, the printer has been added successfully, as shown below. Click the name of the printer or wait for a moment to enter the printer management page.



14. Click the management page of the printer and print the test page as shown below.



15. For text printing test, click the Ctrl+P shortcut, as shown below.



Above is the entire Linux driver installation manual.