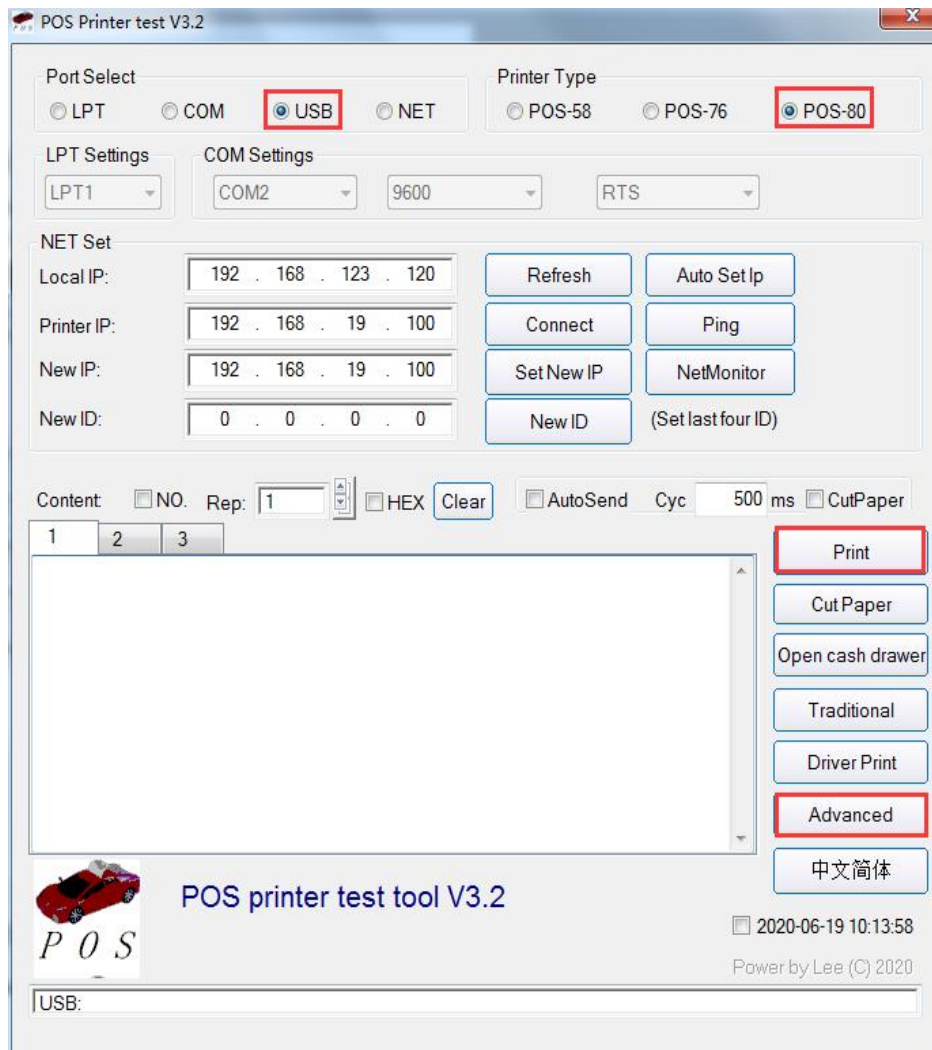


Settings of the Wifi Printer

1、Open the file—“Printer TEST V3.2C” in the folder named as “Tools” in the optical disk. Then start Printer software and follow the steps to set the printer. See the picture followed.



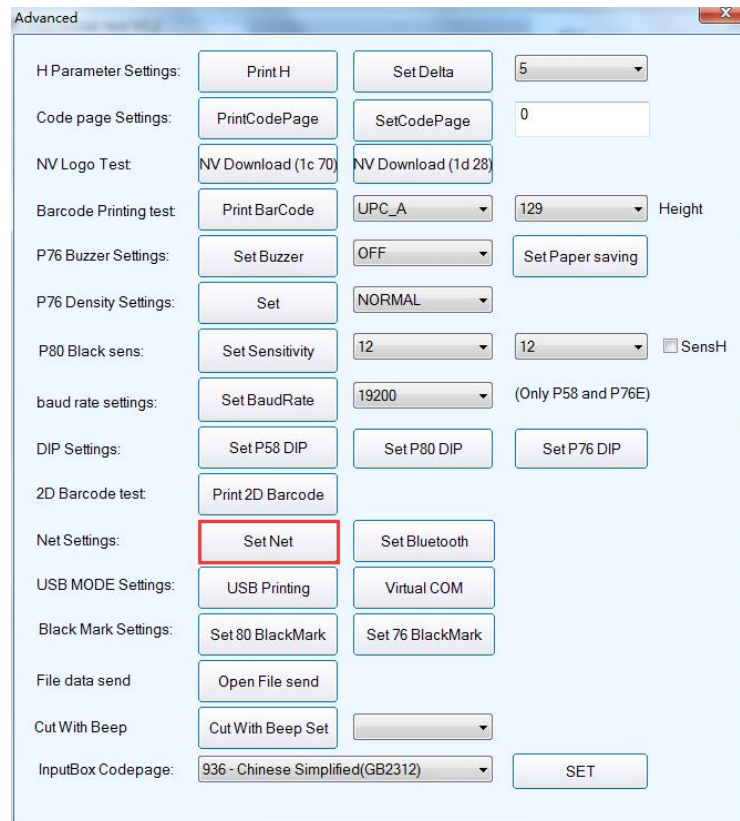
“1” Choose your Printer Model—“POS-80”

“2” Choose “USB Communicative Port “Option

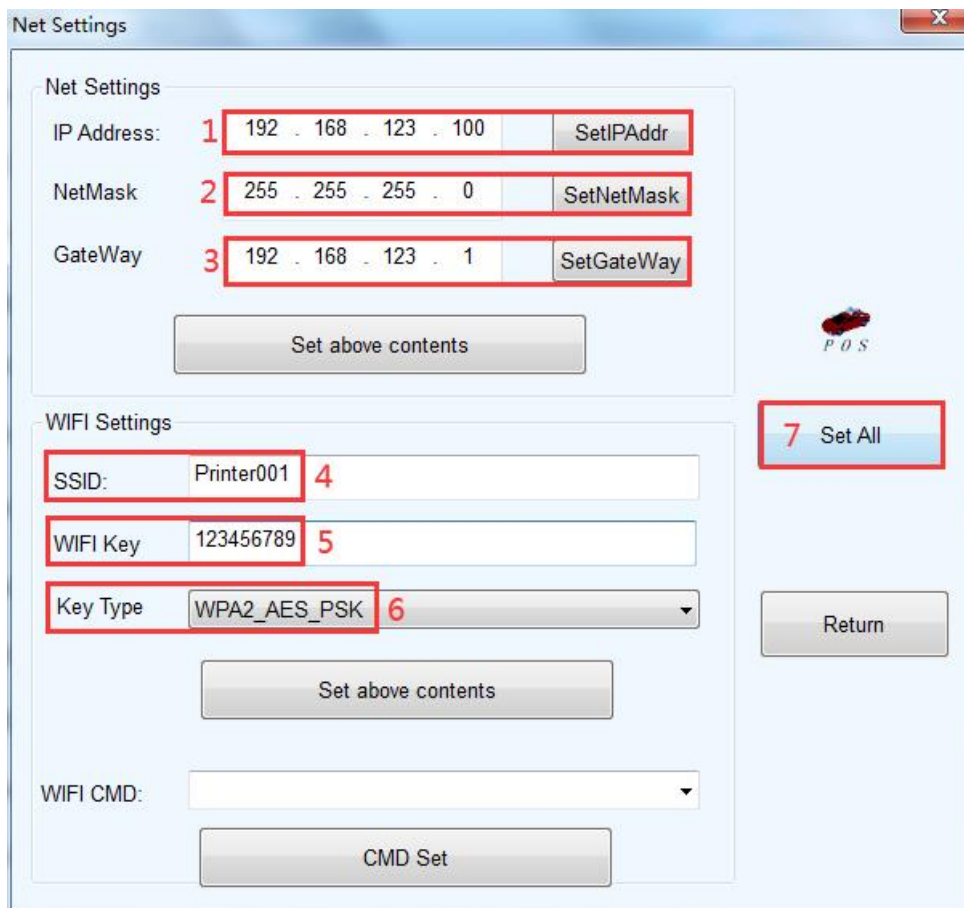
“3” Click the “Print” button to test whether the printer is working.

“4” Via doing the above settings, the printer is tested to be working. Then click the “Advanced” option.

2、 Click the “Advanced”. Then the corresponding window is popped up. See the picture:



3、 Click the “Network Settings” options, and follow the steps to set up the Network information. See the following pictures:



“1” Set up the Printer’s IP address.

“2” Set up the Subnet Mask.

“3” Set up the Gateway.

“4” WIFI SSID address settings Note: the SSID address is the name of your Wireless Router’s name.

For example, if the address of the current Router (SSID) is: *Pinter001*, then this SSID address should be typed in the tab of “SSID”.

“5” WIFI password settings Note: the password of the Wireless Router

For example, if the WIFI’s current password is: *123456789*, then this password should be typed in the tab of “WIFI password”.

“6” Encryption type of WIFI SSID settings Note: the encryption type of the Wireless Router.

For example, if the encryption type of the Router (SSID) is: *WPA_TKIP_AES_PSK*, then this information should be selected in the tab of “SSID Encryption type”.

“7” After filling the above information, click the “Setting” option. The printer will “BEEP”. Next, restart the printer.